



## SAN SETUP – PUTTING SERVERS ON THE SAN QUICKLY AND EASILY

With the Host Integration Tools for Microsoft® Windows® CD, you can configure and install Windows servers on the SAN in minutes and without reboots.

### IT ADMINISTRATORS NEED FAST AND EASY IMPLEMENTATION AND MANAGEMENT

Many technology advancements are designed to make tasks simpler, more efficient, and less time consuming. This is the case for recent improvements in SAN installation and server connectivity. With specific tools and operating systems, multi-server SAN connections can be "a walk in the park" – enabling fast installation and configuration as well as also dramatically reducing license management and tracking.

### SIMPLE SAN SOLUTION SETUP IN 5 MINUTES

Recent advances now allow an operating system to be placed on the SAN in minutes, without reboots. Many operating system vendors have improved their SAN integration not only by providing iSCSI initiators, but also by enabling online installation. Plus, many operating systems support additional SAN feature integration – making installation of features such as Multi-Path I/O (MPIO), backup integration with snapshots, and even basic SAN storage provisioning significantly easier.

EqualLogic offers the Host Integration Tools for Microsoft Windows CD, allowing any Windows system to be setup in less than 5 minutes. Certified as a Microsoft 'Simple SAN Solution', the tools available on the CD enable a new server with a Windows operating system to be integrated on the SAN in minutes – your server fully installed, configured, and working on the SAN with no lengthy installation process, no reboots, and no licenses to buy or track. By automatically configuring hardware and software components such as management tools, initiators, feature drivers, and application integration modules, getting your SAN up and running is headache-free. Your SAN-aware operating system makes this possible, dramatically easing setup for every server.

In fact, not only will the EqualLogic CD install Windows Server 2003 R2 on the SAN, it also installs and configures Volume Shadow Copy Service (VSS) for easy snapshot integration and Virtual Disk Service (VDS) for server-based storage provisioning. This system provides advanced features that simplify your environment (and the IT

administrator's life) for improved backup and recovery operations, automated management, lower costs, and better reliability. With the EqualLogic-Microsoft partnership for a Simple SAN Solution, configuration works on both physical and virtual servers, providing seamless operations regardless of current or future server deployments. And, the solution demonstrates once again that when the storage array and operating system work together easily, your IT infrastructure removes burdens from your IT staff instead of creating them.

## LICENSING RELIEF

EqualLogic has a solution for licensing as well – all features and host integration are provided standard with PS Series storage arrays. Our broad operating system support (not only for iSCSI, but also for features like MPIO) significantly reduces license costs, management, and key tracking. EqualLogic can virtually eliminate licensing hassles, reducing your costs and saving you time, particularly if you have both physical and virtual servers. An added benefit of eliminating license fees is that you can make changes to the environment without needing incremental purchases or throwing away licenses. For example, if you expand, you don't need to buy new licenses; if you consolidate storage, you don't end up with useless licenses that you paid for.

Technology advancements that simplify tasks and ease administrative burdens are extremely valuable – with EqualLogic storage arrays and Host Integration Tools for Microsoft Windows, you can save time and money on your SAN implementation.

To view other Coffee Break Bulletins or to learn more about EqualLogic, visit us at [www.equallogic.com](http://www.equallogic.com).

## PS Series SAN Setup

### A. Insert the Host Integration Tools CD

The Host Integration Tools for Microsoft Windows CD is shipped with the PS Series array.

Insert the CD in the Windows server and follow the instructions. Depending on your operating system, you will install:

- EqualLogic Remote Setup Wizard
- EqualLogic Auto-Snapshot Manager with Volume Shadow Copy Service (VSS) provider
- EqualLogic Virtual Disk Service (VDS) provider
- Microsoft iSCSI Software Initiator

### B. Launch the Remote Setup Wizard

Choose to initialize a PS Series array.



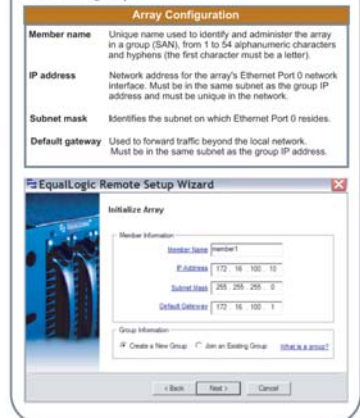
### C. Discover the Array

Select the array in the list of discovered arrays.



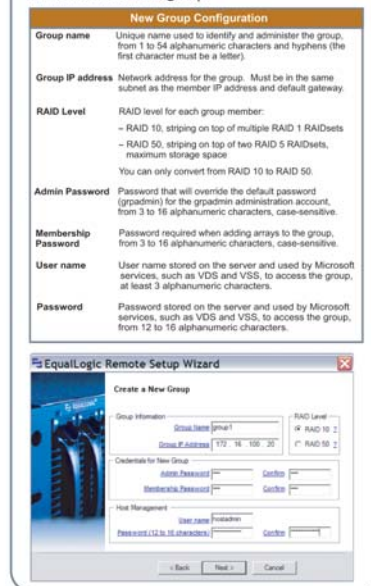
### D. Initialize the Array

Enter the array network configuration and choose to create a group.



### E. Configure the Group

Enter the group configuration, passwords, and the user name and password that Microsoft services will use to access the group.



110 Spit Brook Road, Building ZK02, Nashua, NH 03062  
Tel 603.579.9762 / Fax 603.579.6910 / [www.equallogic.com](http://www.equallogic.com)